

SJL^H
SIR JOHN LYON HOUSE

APARTMENT 3



8 HIGH TIMBER STREET, LONDON EC4

WINNER OF A
2007 LEAF AWARD

Apartment 3 has been carefully designed to provide spacious, contemporary accommodation ideally suited to modern city living.





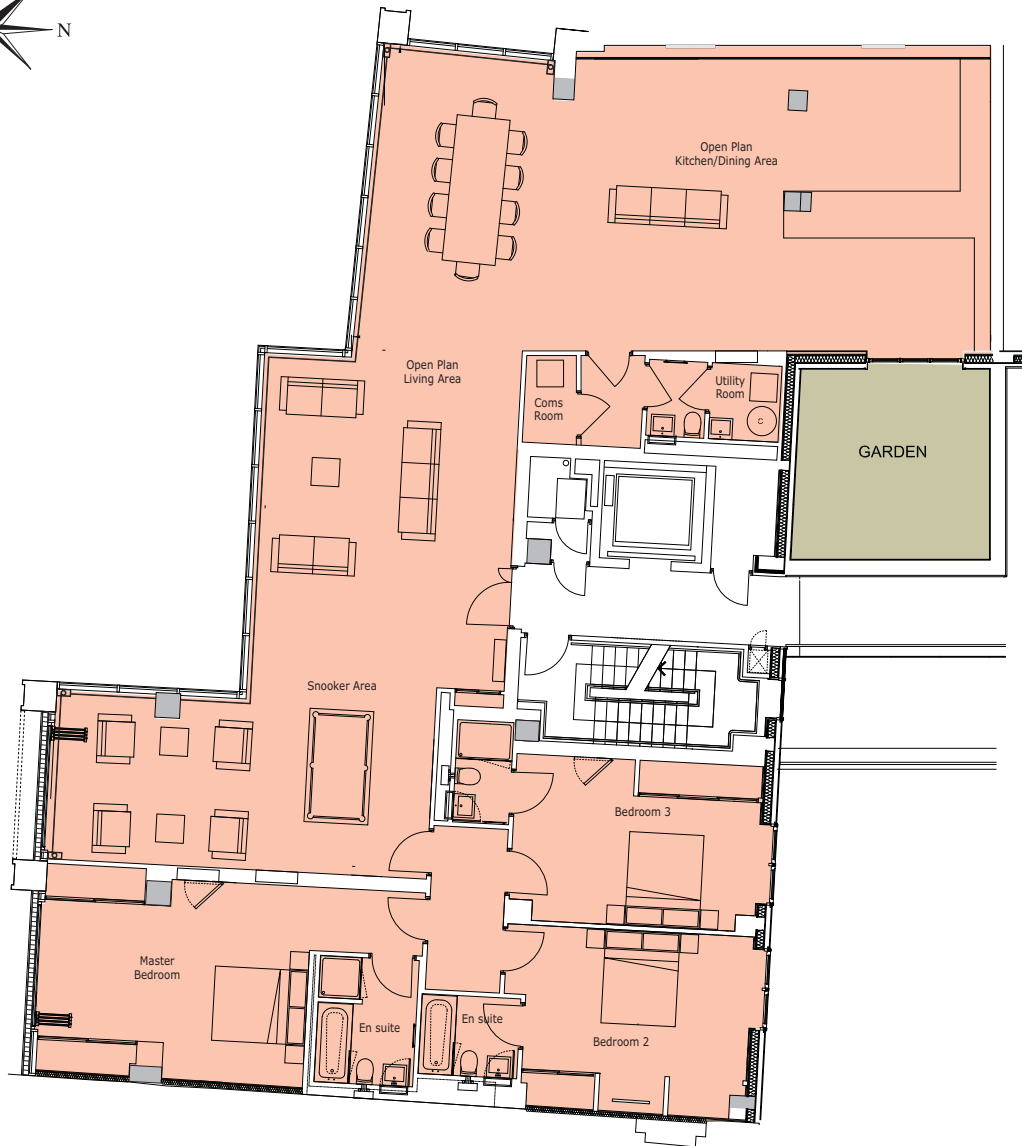
As well as stunning views across the Thames this spacious apartment benefits from state of the art electronics to control heating, lighting and entertainment systems and also from it's own courtyard garden space.

Attention to detail is evident throughout, from the built-in coffee maker in the fully fitted kitchen through to the concealed plasma screen televisions, which appear at the touch of a button.





R
I
V
E
R
T
H
A
M
E
S



Internal Area 253.7 sq m (2,731 sq ft) External Area 16.1 sq m (173.3 sq ft)

Total Unit Area 269.8 sq m (2,904.30 sq ft)

- Home cinema system to main living space.
- Entertainment, lighting control & automation systems.
- Automatic blinds.
- Underfloor heating.
- Comfort cooling.
- Oak Markant parquet flooring.
- Schiffrini fitted kitchens with hand finished granite worktops.
- Integrated Gaggenau appliances include: oven, hob, extractor, microwave and grill, coffee machine, wine cooler.
- Integrated dishwasher by Miele.
- Fridge/freezer by Sub-Zero.
- Utility room including Bosch appliances; washing machine and tumble dryer.
- 1 wash room and 3 en-suite bathroom/shower rooms, each elegantly tiled, with WC, bath and/or shower tray, recessed wall mounted cabinets with mirror and chrome fittings.
- All wardrobes are manufactured in oak and contain automatic lighting.
- Courtyard garden with terracotta tiled walls and natural york stone paving.
- 24 hour portage.
- Zurich warranty.





SIR JOHN LYON HOUSE

Sir John Lyon House enjoys a premier position on the River Thames by the Millennium Bridge and just minutes from the London Stock Exchange and the Bank of England.



A Development by

Riverview
Holdings Limited
020 7248 9747

www.sirjohnlyonhouse.com

IMPORTANT NOTICE

Riverview Holdings Limited give notice that:

1. They are not authorised to make or give any representations or warranties in relation to the property either here or elsewhere. They assume no responsibility for any statement that may be made in these particulars. These particulars do not form part of any offer or contract and must not be relied upon as statements or representations of fact.
2. Any areas, measurements or distances are approximate. The text, photographs and plans are for guidance only and are not necessarily comprehensive. Purchasers must satisfy themselves by inspection or otherwise.
3. These particulars were prepared from preliminary plans and specifications before the completion of the properties and are intended only as a guide. They may have been changed during construction and final finishes could vary. Prospective purchasers should not rely on this information but must get their solicitor to check the plans and specification attached to their contract. (04/08)